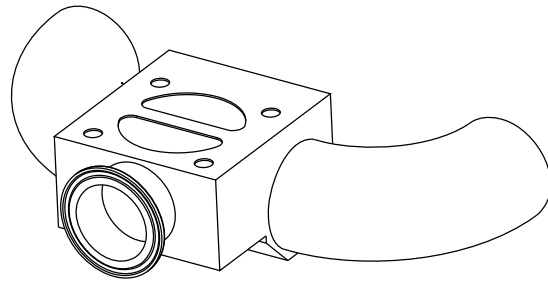
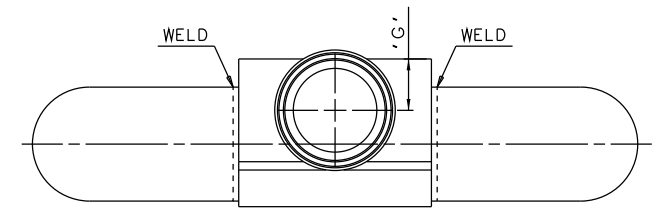
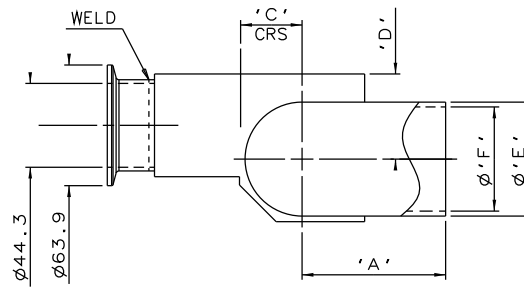
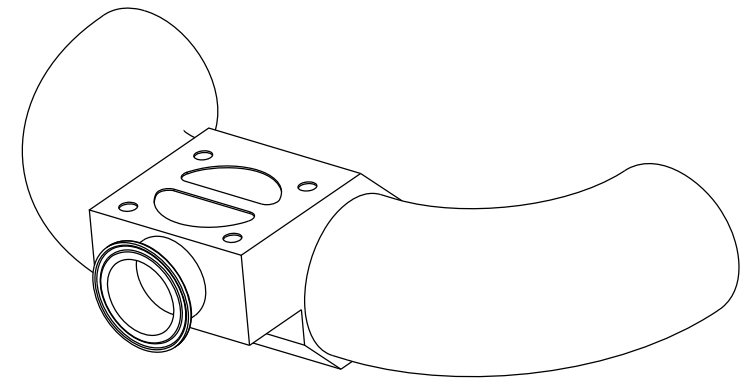
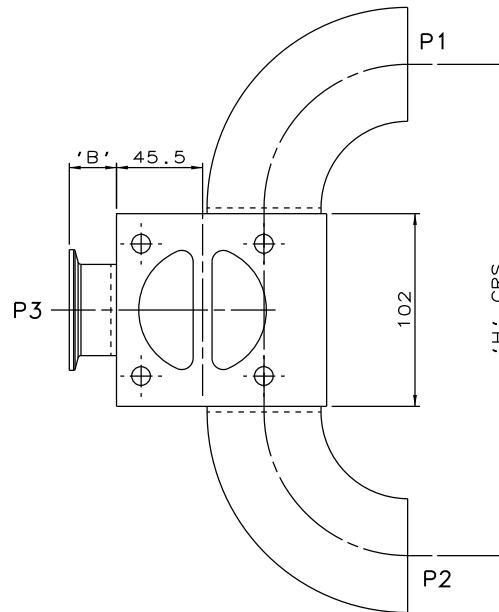


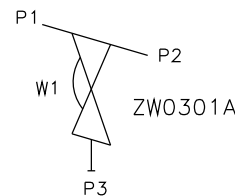
DN40 MAINLINE ONLY



DN50 MAINLINE ONLY



DN65 TO DN100  
MAINLINE ONLY



ORIENTATION AS PER  
P&ID DIAGRAM FOR  
OPTIMUM DRAINABILITY.

MAINLINE SIZE	A	B	C	D	øE	øF	G	H	BODY WEIGHT
mm	mm	mm	mm	mm	mm	mm	mm	mm	Kgs
DN40	97.0	25.0	27.2	38.5	48.3	44.3	26.2	302.0	4.2
DN50	76.0	25.0	32.6	45.0	60.3	55.1	27.2	260.0	4.3
DN65	95.0	25.0	40.5	52.0	76.1	70.9	27.2	312.0	4.6
DN80	114.0	25.0	46.9	56.0	88.9	83.7	27.2	350.0	5.5
DN100	152.0	25.0	59.6	65.0	114.3	109.1	27.2	426.0	7.5

The information on this sheet is Private and Confidential and is the property of Crane Process Flow Technologies Limited and must not be published directly or indirectly in any manner whatsoever without the written permission of the Company and must not be used in any way detrimental to their interests.  
© Crane Process Flow Technologies

**CRANE** Process Flow Technologies  
A Crane Co. Company

**Saunders**  
The Science Inside

Title  
SCHEDULE OF LEADING DIMENSIONS FOR  
DN40 WEIR POINT OF USE 'T' BODY WITH :  
MAINLINE : ISO 1127 S1 BUTT WELD ENDS  
BRANCH : DN40 HYGIENIC CLAMP END WITH  
ISO 1127 S1 BORE

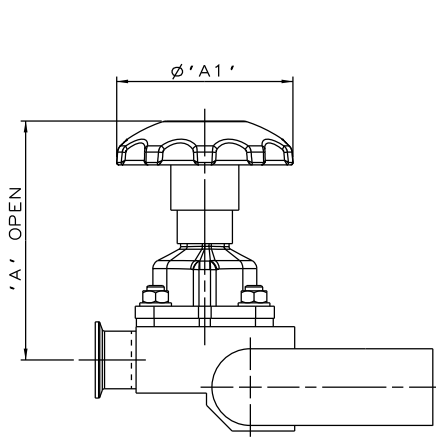
Drawn R1 Date 17.04.12

Checked RND Date 17.04.12

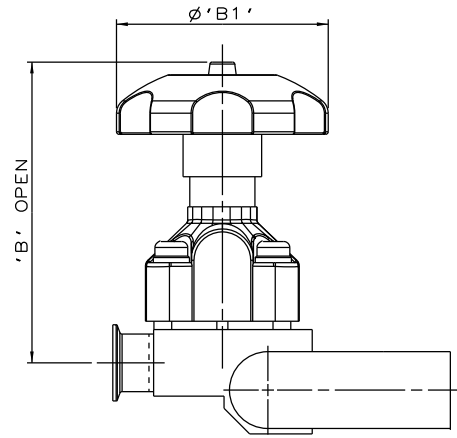
First Angle Projection Method E

UNCONTROLLED IN  
HARD COPY FORMAT

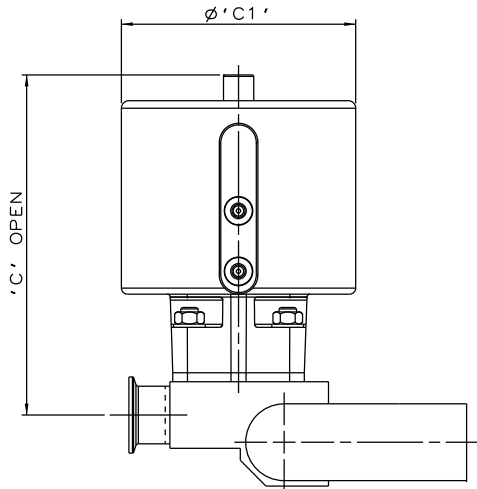
Drawing No. WEB-188 Issue. 1



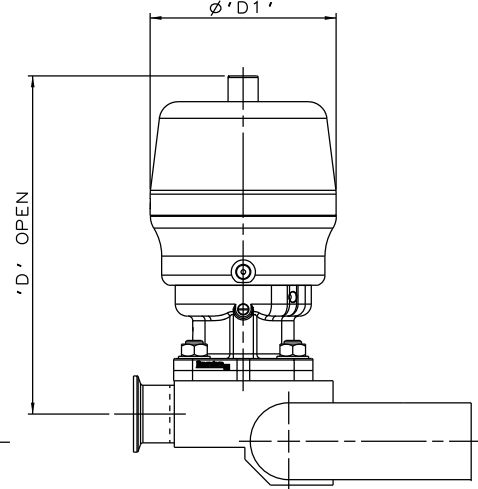
SS NON SEALED  
BONNET ASSEMBLY



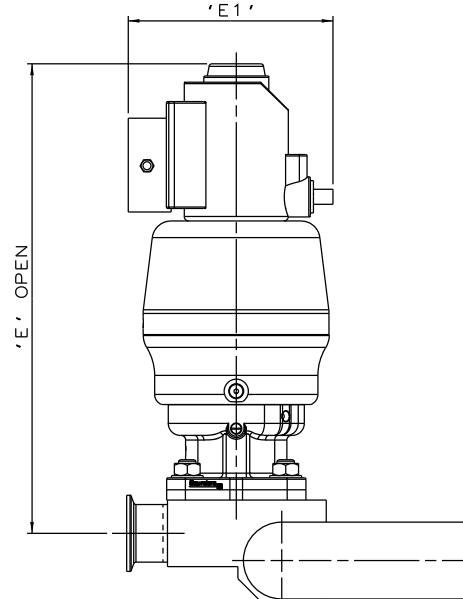
PES BONNET  
ASSEMBLY



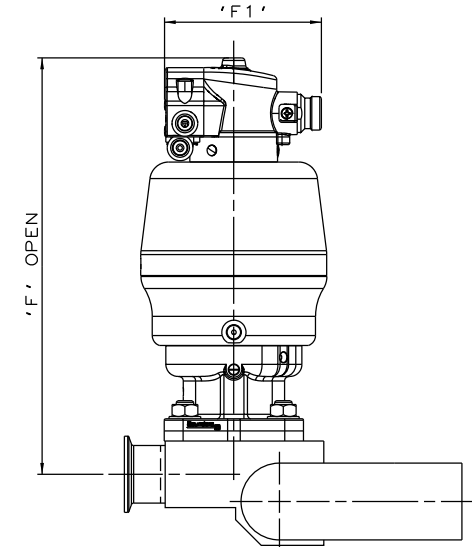
EC ACTUATOR  
(ALL MODES)



\*S360 ACTUATOR



\*S360 ACTUATOR  
WITH I-VUE SENSOR



\*S360 ACTUATOR  
WITH M-VUE SENSOR

\*DIMENSIONS SHOW MAXIMUM ENVELOPE FOR ALL MODES

BRANCH SIZE		A		A1		B		B1		C		C1		D		D1		E		E1		F		F1	
mm	inch	mm	inch	mm	inch	mm	inch	mm	inch	mm	inch	mm	inch	mm	inch	mm	inch	mm	inch	mm	inch	mm	inch	mm	inch
DN40	1.50	163.2	6.43	120.0	4.72	204.2	8.04	140.0	5.51	230.2	9.06	155.0	6.10	229.2	9.02	123.0	4.84	316.2	12.45	136.0	5.35	280.2	11.03	103.8	4.09

The information on this sheet is Private and Confidential and is the property of Crane Process Flow Technologies Limited and must not be published directly or indirectly in any manner whatsoever without the written permission of the Company and must not be used in any way detrimental to their interests.  
© Crane Process Flow Technologies

<b>CRANE</b>	Process Flow Technologies A Crane Co. Company	<b>Saunders</b> The Science Inside
--------------	--	---------------------------------------

Title  
SCHEDULE OF LEADING DIMENSIONS FOR DN40/1.50  
WEIR 'T' BODY WITH MAINLINE BUTT WELD ISO 1127 S1  
ENDS, BRANCH HYGIENIC CLAMP END WITH ISO 1127 S1 BORE.  
FITTED WITH TOPWORKS OPTIONS

Drawn RI	Date 09.05.17	UNCONTROLLED IN HARD COPY FORMAT
Checked RND	Date 09.05.17	
First Angle Projection Method E	DO NOT SCALE	Drawing No. WEB-188-ASSY
		Issue. 1